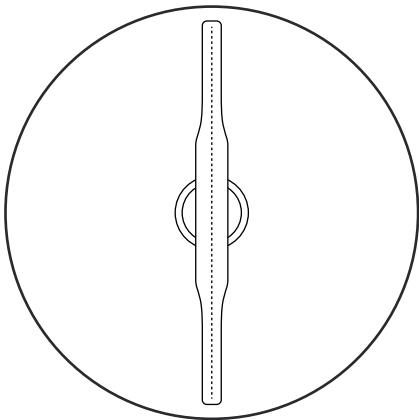


Holographic ♦  
Intelligent Display

INSTRUCTION MANUAL

Dsee-50s/30s(z)



Nanjing DseeLab Digital Technology Ltd.

Catch Your Eyes with Great Varieties  
**Nanjing DseeLab Digital Technology Ltd.**



---

Do not dismantle the device,  
plug in or take out the TF card  
without permission!

To keep the device from damage,  
please use the following delivery services  
if forwarding is needed:



SF Express



Deppon Express



KYE



## Security Warning

- 01** Do not touch the high speed running LED blades while operating.
- 02** Please fix the device properly on solid walls or fixtures to avoid the security risks of falling down caused by vibration while operating.
- 03** Make sure that the device without cover is fixed at a safe distance to protect people from touching.



### Attention:

Please read this instruction manual very carefully before using the devices. The users undertake all the personal injuries or property losses caused by not following this instruction manual when operating the devices.

Nanjing DseeLab Digital Technology Ltd. reserves the right to revise and explain this instruction manual. This instruction manual may be revised without further notice.

## Device Parameter List

Device Size	50cm/33cm
Number of Blades	1
Number of LEDs per Blade	256
Display Resolution	512*512
Display Area	0.170 m <sup>2</sup> / 0.855 m <sup>2</sup>
Light Intensity	800cd/ m <sup>2</sup> / 1800cd/m <sup>2</sup>
Device Thickness	40mm
Device Weight	400g / 365g
Input Voltage	12V
Power Rating (MAX)	30W / 24W
Device Rotational Speed	1500RPM
Communication Method	2.4G WiFi 802.11b/g/n
Memory Space	8G/ 16G
Supported Format	Picture: jpg, jpeg, png, gif Video: mp4, avi, rmvb, mkv, wmv, mov, flv
Whether Supporting Wireless Mirroring	Optional
Whether Supporting Screen Union	NO
Screen Union Cable	N/A
Theoretical Maximum Number of Screen Union	
Recommended Number of Screen Union	N/A

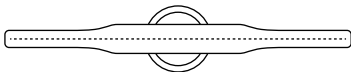
## Device Checklist

Item	Quantity
Holographic Intelligent Display Dsee-50s/30s(z)	1
Power Adapter	1
Remote Control	1
Wall Hanging Fastener	1
Wall Hanging Fixing Expansion Screws	2
Warranty Card	1
Certificate	1
User Manual	1

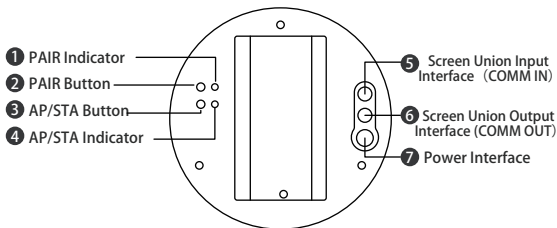
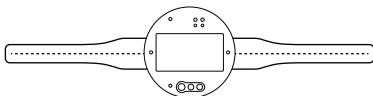
## Product Overview

Holographic Intelligent Display Dsee-50s/30s(z) is a kind of display device that uses the persistence of vision technology (POV) with a blade of high-density LEDs spinning at high speed to form tridimensional images. This kind of device has characteristics such as low power consumption, high visual attractiveness, portability, high cost performance and etc. Meanwhile, the device can be controlled and managed through remote control, APP (iOS, Android), PC software and cloud platform. The device supports a variety of picture and video formats to satisfy the need to present at different application situations.

### Product View



Dsee-50s/30s(z)



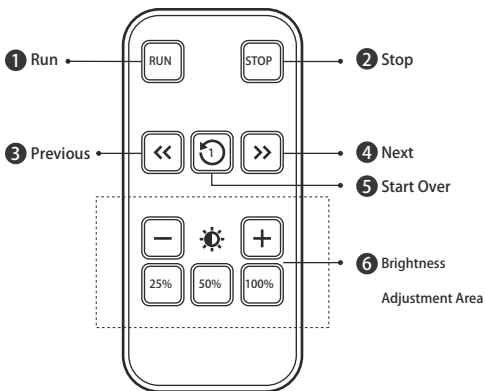
- 1 PAIR Indicator: Indicate modes and operations.
- 2 PAIR Button: Switch between the master and slave mode, pair the remote control.
- 3 AP/STA Button: Press the AP/STA button for 2 seconds to reset the device to normal mode (AP mode, the device itself provides WiFi hotspot).
- 4 AP/STA Indicator: Indicate WiFi mode of the device. Normal mode (AP mode) or network mode (STA mode).
- 5 6 Screen Union Input/Output Interface: In use when the device is displaying with screen union.
- 7 Power Interface: Plug in the power adapter for the electrical power supply.

**PAIR Indicator Light**

Indicator Light Color	Instructions
Constantly Red	Master mode, motor stops
Constantly Pink	Master mode, motor starts
Light Off	Slave mode, motor stops
Constantly Blue	Slave mode, motor starts
Blue Flickers	Pairing the remote control

**AP/STA Indicator Light**

Indicator Light Color	Instructions
Green Flickers	The device is starting
Constantly Green	The device is in normal mode (AP mode).
Blue Flickers	Connecting to the network. Device is in network mode(STA mode).
Constantly Blue	Connected to the router. Device is in network mode(STA mode).
Red Flickers	Error in connection.



- 1 Run:** Start the device and switch from standby mode to running mode.
- 2 Stop:** Stop the device and switch from running mode to standby state.
- 3 Previous:** Switch to display the previous video in the playlist.
- 4 Next:** Switch to display the next video in the playlist.
- 5 Start Over:** Start displaying the first video in the playlist.
- 6 Brightness:** Adjust the brightness of the device.

## Operation Steps

### Power Supply Connection

1

Take out the battery adapter, plug it in the power interface for electrical power supply. The indicator LEDs behind the device will blink and off, and the PAIR indicator will be red constantly after a short time.

### Remote Control Pairing

2

When device is in stand-by status, push the PAIR button on the backside, indicator light turns red to blue, point remote control to device and long press 100% button in brightness control area, blue light flashes and turns red, pairing successful.

### Start and Stop the Device

3

Point remote control to device, press Run, device starts to rotate and image turns up, the back indicator turns pink and opens successfully.

Point remote control to the running device, press STOP, the internal rotation of device turns slow to stop, the back indicator turns red,, close successfully.

## Video Control

4

Aim the remote control at the display machine and press the ">>" button to switch back

One material, play the next content;

Aim the remote control at the display and press the "<<" button to switch forward

One material, play the last one.

## Screen Union of Multiple Devices

5

The display machine can switch two modes, host mode and slave mode.

Host mode is a content display for a single machine, from the display of machine mode

The display machine needs to be connected to the display machine of host mode, all the areas will come

Show the content. The default display is in host mode. Slave mode display machine

You can't display the content alone, and you can't control it with a remote control.

### 1. Master/Slave Mode Switch

When the display machine is in standby mode, press and hold the PAIR button on the back.

PAIR indicator lights change from red to extinguished, indicating that the mode is switched to slave

Mode; When the display machine is in slave mode, long press the PAIR button until

### 2. Device Connection

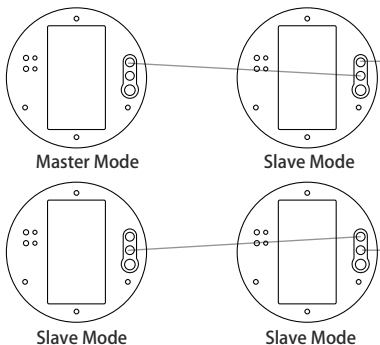
When using multiple machines to display content, the machine is connected as follows:

Display machine 1 (set to host mode) "online output interface" connection

To display machine 2 (set to slave mode) "on-line input interface", display

The "on-line output interface" of machine 2 (set to slave mode) is connected to the display machine

## Four Devices' Connection Illustration



### WiFi Mode Reset

6

Press the AP/STA button for a while will switch the device from network mode to normal mode. When success, the AP/STA indicator will change from blue to green, and the WiFi provided by the device can be found on cell phones and computers at the same time.

### Playlist Control

7

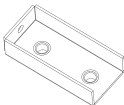
Display machine playback content Settings, playback mode Settings and playback th

For sequential operation, you need to use the computer Settings and installation that can connect to the wireless network Software PC software, use software to set the operation.

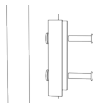


The Dsee-50s/30s(z) supports wall hanging and bracket installation, with the following only The method of wall hanging installation is introduced. For vertical mounting of bracket, please consult dealers.

1



Wall Hanging Fastener



Installation Illustration

### Install the Fastener

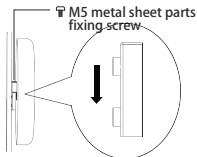
Wall mounting fasteners are fixed directly to the wall using expansion screws or ordinary screws

On, make sure the sheet metal parts are installed firmly to prevent vibration when the equipment is rotating

Movement causes equipment to fall and become dangerous.

2

Fixing structure behind the machine. Insert the bottom into the wall hanging fixtur, simultaneously. Screw the M5 sheet metal parts as shown in the figure. Set the screws and complete the installation.



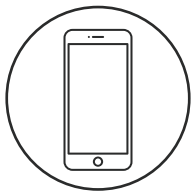


---

## Dsee.Lab Cloud Platform

This device supports remote control and management through the Dsee.Lab cloud platform. The cloud platform website address is: [cloud.dseelab.com](http://cloud.dseelab.com)

Before connecting to the cloud platform, the device's WiFi mode should be switched to network mode(STA mode) manually. Detailed operation steps of switching to the network mode and switching back to the normal mode can be referred to the part about connection mode switch on Page 16.



---

## Mobile Software Instructions

# Operation Steps

## Download Software

- 1 Log in to <http://www.dseelab.com> and download the software.

## 2 WiFi Connection

### 1. Device is in normal mode

- 1 Keep the smartphone connect to the device WiFi, type in the corresponding passwords.
- 2 Click ☐ off ☒ start or stop the device.

### 2. Device is in network mode


- 1 Keep the smartphone connect to the router which the device connect to.
- 2 Click  search for devices which are connected to the network. Choose the device on the list, type in the corresponding passwords and turn to home page after connecting successfully.
- 3 Click ☐ off ☒ start or stop the device.




### 3

## WiFi Mode Switch

### 1. Switch from normal mode to network mode.



- 1 Click  to start the WiFi mode switch, type in the WiFi SSID and password of the router.
- 2 Click on the switch button.
- 3 If the device connects to the network successfully, then the AP/STA indicator at the back of the device turns blue. If the connection is failed, then the red light blinks.

### 2. Switch from network mode to normal mode.

- 1 Click  to start the WiFi mode switch, click the button to switch to normal mode.
- 2 When the switch is successful, the device WiFi can be found by smartphone or PC again.

### 4

## Video or Picture Upload

Click  button, and click  to choose videos or pictures, name the chosen file and confirm to finish the upload.




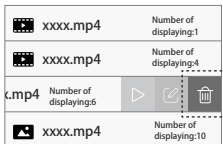
## Clear the Playlist

- 5 Click  button, click  button to clear the playlist.



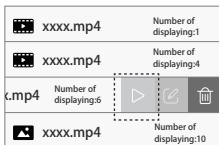
## Delete

- 6 Swipe left on the chosen video in the playlist, and click  to delete this file.



## Play/Pause

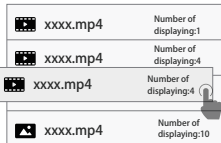
- 7 Swipe left on the chosen file in the playlist, Click to play or pause the video.



8

## Adjust the Playlist Order

Long press on the chosen video, drag it upward or downward to the corresponding position to adjust the order of the playlist.



9

	xxxx.mp4	Number of displaying:1
	xxxx.mp4	Number of displaying:4
	xxxx.mp4	Number of displaying:6
	xxxx.mp4	Number of displaying:10

Video Name: xxxx.mp4

Number of displaying:

Cancel

Confirm

## Set Number of Loops of Video Playback

Swipe left on the chosen video in the playlist, and click to enter the dialogue box to edit the number of loops of video playback.(Note: 0 means play this video indefinitely)